

## Building the Resilience of Papua's Indigenous Peoples through Adaptive Social Protection



The indigenous peoples of Papua (OAP) stand as the most at-risk group in the face of covariate shocks, such as the recent COVID-19 pandemic and the ongoing conflicts in the Papua region. The government must establish an adaptive social protection (ASP) framework that involves collaboration among actors and synergy across multiple sectors. The partnership should be guided by the Papua Development Acceleration Master Plan (RIPPP). SMERU published a series of five policy briefs on PSA for OAP with different focuses. Two briefs propose transformative livelihood development schemes for OAP, two others emphasize optimizing the handling of refugees in Papua, and one brief outlines recommendations for four main features in the PSA design for OAP.

### Latest Publications



#### Three Strategies for Enhancing Social Protection for Internally Displaced People in Papua Who are Confronted with Multi-layered Vulnerabilities

The indigenous peoples of Papua (OAP) have been displaced and evacuated from their villages due to the ongoing armed conflict in Papua. A study by SMERU reveals that displaced OAPs are confronted with layered vulnerabilities arising from both structural and cultural impediments, further restricting their mobility. What role does social protection play in assisting OAP refugees? Read the analysis and recommendations by SMERU in the article published in *The Conversation Indonesia*. [Click the image](#) to read the full article.



#### Replacing the Old with the New: Long-term Issues of Teacher Professional Development Reforms in Indonesia

The Indonesian Government has implemented six major teacher professional development (TPD) reform initiatives over the past 40 years. Yet, recent research suggests that TPD initiatives only sometimes strongly impact teacher performance. This article examines the evolution of TPD reforms in Indonesia and analyzes how teachers and other stakeholders perceive the effectiveness of those initiatives. [Click the image](#) to read the article.

## Latest Research



## Health Financing Governance and Reforms in Indonesia: Analysis of Political Economy Dynamics

Indonesia's healthcare financing underwent a transformation with the 2014 National Health Insurance (JKN) reform, highlighting the importance of primary healthcare services. The successful implementation of JKN has offered valuable insights into stakeholder roles and strategies for gaining political support. SMERU undertakes a study that examines stakeholder interactions and institutional processes of the 2014 JKN reform. The objective of this analysis is to comprehend the strategies and compromises that contribute to the reform's priority on primary healthcare expenditure. [Click the image](#) to learn more about the study.

## Acara SMERU



## Education Transformation: The Role of Digital Platforms in Improving the Quality of the Education Ecosystem

Article 33 Indonesia and SMERU, together with the National Research and Innovation Agency (BRIN), the Indonesian Center for Law and Policy Studies (PSHK), Centre for Innovation Policy and Governance (CIPG), and Regional Autonomy Implementation Monitoring Committee (KPPD) collaborated to hold a discussion forum for The Indonesian Science Technology Innovation Policy Lecture Series III 2023, "Education Transformation: The Role of Digital Platforms in Improving the Quality of the Education Ecosystem" on 14 November 2023. This virtual event addressed strategies for leveraging and integrating technology to enhance the quality of education across various levels, from early childhood to higher education. Dr. Iwan Syahril, Ph.D., the Director-General of Early Childhood Education, Basic Education, and Secondary Education at the Ministry of Education and Culture (Kemendikbud Ristek), delivered the keynote speech, which focused on the government's various efforts to optimize technology in supporting learning throughout Indonesia.

## National Teachers Day



## Is the Game Worth the Candle? Examining the Effectiveness of Initial Teacher Education in Indonesia

The teacher education program in Indonesia (PPG) is in great demand as it offers teaching certificates, certification allowances, and recognition as professional teachers. This working paper by RISE Programme in Indonesia evaluates the PPG program and the competencies of its graduates. How do the abilities of PPG graduates differ from their counterparts who did not undertake the program? [Click the image](#) to read the paper in full.

## SMERU in the Media



This article in *Kompas* daily discusses the inequality of income and welfare of the people of East Nusa Tenggara (NTT), as shown by the Gini index figure of 0.34. This figure shows that income among NTT people is very unequal. What can local governments do to address inequality in NTT? [Click the image](#) to read the complete article.

## SMERU Learning Centre



## Training on Introduction to Impact Evaluation (Batch 4)

This training is designed to benefit individuals whose job responsibilities include program implementation and evaluation. Save the date and register now!

 **13-14 December 2023**

 **Online via Zoom**

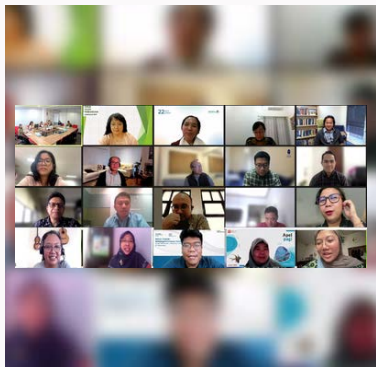
 [form.smeru.or.id/ted4-register](https://form.smeru.or.id/ted4-register)



SMERU research fellow, Asep Suryahadi, attended a research workshop on the energy transition in Indonesia and Australia on 1–3 November 2023 in Canberra, Australia. The workshop was organized by the Australian National University and part of the KONEKSI project entitled “Initiative for an Open, Inclusive, and Integrated Climate Change Model for Indonesia”. Asep and several Indonesian researchers offered input to develop an energy transition model that incorporates macroeconomic analysis and social indices of impacts while identifying potential collaboration between Indonesian and Australian scholars.



The Deputy for Government Policy Support and National Insights at the Vice President Secretariat, in collaboration with SMERU, hosted a policy dialogue on 27 October 2023 focusing on adaptive social protection (ASP) for the indigenous peoples of Papua (OAP). The hybrid event discussed SMERU’s research findings on implementing social protection in Papua to date and SMERU’s recommendations regarding the future application of ASP, particularly the development of transformative livelihoods for OAP.



SMERU’s Institute Secretary, Heni Kurniasih, attended the 2023 Forum Kajian Pembangunan (FKP) Organizing Committee Annual Meeting on 3 November 2023, held in a hybrid format (at SMERU’s office and online video meeting). In the meeting attended by representatives of FKP member institutions, Heni, as the coordinator of FKP 2023, presented a report on the implementation of FKP 2022–2023. Throughout 2022–2023, 25 FKP member organizations coordinated 38 events, with 27 held online and 5 delivered in a hybrid format. During the meeting, the role of FKP coordinator was handed over to Joy Tulung from Sam Ratulangi University and elected vice coordinator from the Bank Indonesia Institute.



SMERU was a collaborator in the “Initiation Class for Education Renewal” (KIBAR) workshop organized by the Tanoto Foundation on 9 November 2023. During the event, collaborators identified challenges within the Indonesian education system from the perspective of each organization. KIBAR is part of a series of events leading up to the Policy Forum on Education (PFoE), scheduled for the upcoming December.



SMERU’s researcher, Asri Yusrina, and Institute Secretary, Heni Kurniasih, were invited as panelists in the Annual Joint Sector Review Retreat on 22–23 November 2023. The retreat was co-chaired by the Ministry of Education, Culture, Research and Technology and the Ministry of Religious Affairs. The purpose of the retreat was to promote robust dialogue and information sharing to build education sector coordination amongst government, civil society and private-sector partners. Discussions from this retreat will inform current and future national education plans and help to identify and shape education programming priorities.



SMERU Director, Widjajanti Isdijoso, spoke during the panel discussion session on “The Role of Collaborative Research for Australia-Indonesia Partnerships” at the Launch of the KONEKSI Program in Jakarta. Widjajanti shared SMERU’s experience in providing research-based policy insights to policymakers and recounted SMERU’s challenges and experiences in collaborating with international research institutions and universities.