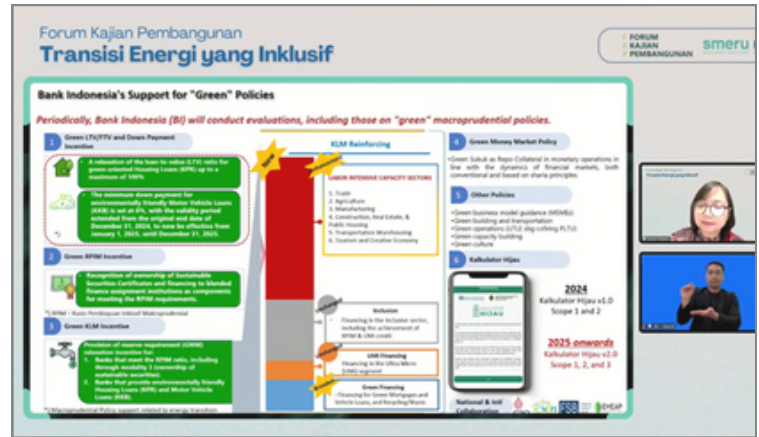
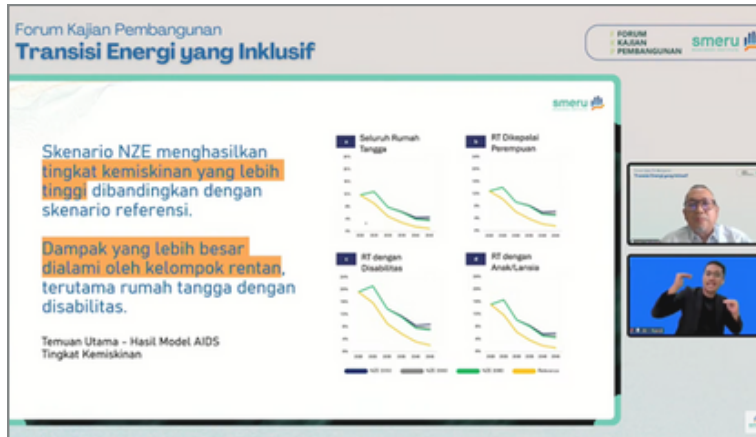


## Towards an Inclusive Energy Transition



Is an inclusive energy transition possible? This question was the central theme of the Forum Kajian Pembangunan webinar held by SMERU on 16 July 2025. In his presentation, SMERU's Senior Research Fellow, Asep Suryahadi, presented a simulation-based study on the impact of decarbonizing the energy sector on vulnerable populations. The study revealed that under a net zero emission scenario, poverty levels could rise significantly if not counterbalanced by effective social protection policies. Meanwhile, Bank Indonesia's Senior Economist, Arnita Rishanty, highlighted the central bank's strategies for managing climate-related risks. [Click the image](#) to watch the webinar and access the presentation slides.

### Latest Research



Photo: Canva

### Baseline Study on First Click Project: Strengthening Digital Protection and Well-Being for Children (Phase 2)

Children in Indonesia are increasingly active in the digital space. Nearly half of all internet users in the country are children and adolescents (APJII 2024). While the digital world offers many opportunities, overexposure can harm children's mental, social, and cognitive development. SMERU is supporting efforts to address this issue by conducting a baseline study for First Click, a Save the Children program focused on strengthening digital child protection. The next phase of the program will incorporate mental health and psychosocial support into the child protection system. [Click the image](#) to learn more.

### Latest Publications

### Lessons from Indonesia's Public Health Risk Communication Response to COVID-19: Policy Brief



The COVID-19 pandemic, which emerged in 2019, brought significant challenges for Indonesia and left behind critical lessons—particularly in public health risk communication.

This policy brief highlights the key communication challenges faced during the pandemic and how they affected public understanding and behavior related to infection prevention, testing, and vaccination. The findings offer valuable insights for improving future emergency response and communication strategies. [Click the image](#) to read more.

SMERU  
Learning  
Centre

### HOW TO WRITE A STRONG POLICY BRIEF

#### What you'll learn:

- ✓ Strategies for communicating research
- ✓ Key principles & structure of a policy brief
- ✓ Effective writing techniques

SIGN UP  
TODAY!



20-21  
August 2025  
Online

## Inside SMERU

### Question

In your opinion, what is the most important skill for a quantitative researcher to produce strong and relevant analysis?



Jonathan Farez Satyadharma  
Junior Researcher

As a researcher who works extensively with data (both numerical and visual), **patience** and a **willingness to keep trying** are the most crucial skills. Mastering tools like Stata, Python, or R takes time, but those tools are useless without those two core skills. I don't consider myself an expert yet. It takes trial and error many times before you reach results you can stand behind. At the end of the day, you have to trust your own process before you expect others to trust your results. Before confidence surrounds us, we must first estimate our own.

## SMERU in the Media



This *Kompas* article highlights the importance of education in poverty reduction. A 2017 UNESCO study found that global poverty could be reduced by half if everyone completed secondary education. Unfortunately, poor communities often lag behind at this level. The article also cites a 2019 SMERU study, which found that adults who grew up in poor households earn 87% less than those who did not. [Click the image](#) to read more.

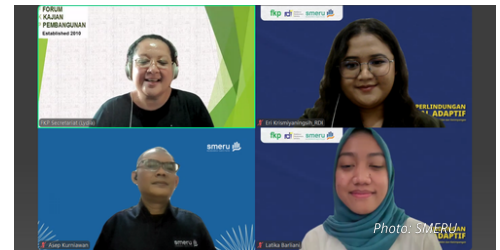
## Activities



On 1 July 2025, the SMERU research team met with the Minister of Manpower, Yassierli, at the Ministry's office in Jakarta. The meeting, facilitated by the Minister's Special Staff, Dr. Moh. Yorga Permana, focused on social protection for informal workers. During the discussion, SMERU presented findings on the low participation of informal digital workers in the national employment social security system. As a follow-up, SMERU will prepare a concept note for a further study focused on social protection for informal digital workers.



On 17 July 2025, SMERU hosted a follow-up workshop with civil society organizations working on energy transition issues. The goal was to design collaborative activities and develop a shared agenda based on the discussions from the previous meeting. During the initial workshop held on 11 June 2025, participants identified two key issues to follow up on: energy transition financing at the regional level and the regulatory framework and authority of local governments.



On 29 July 2025, SMERU and the Resilience Development Initiative (RDI) co-hosted a Forum Kajian Pembangunan webinar on the theme "Adaptive Social Protection: Responding to Risks, Climate, and Inequality." The webinar featured two insightful presentations: Eri Krismiyaningsih (RDI) shared key concepts and best practices in adaptive social protection, while Asep Kurniawan (SMERU) presented findings from a study on adaptive social protection for Indigenous Papuans.



This work is licensed under Creative Commons Attribution-Noncommercial 4.0 International License. SMERU's content may be copied or distributed for noncommercial use provided that it is appropriately attributed to The SMERU Research Institute.

In the absence of institutional arrangements, PDF formats of SMERU's publications may not be uploaded online and online content may only be published via a link to SMERU's website.

Visit us:



© 2025 The SMERU Research Institute  
All rights reserved.