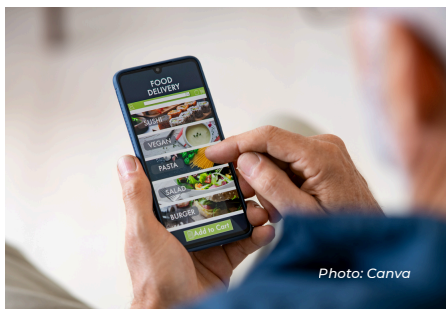


A Study on Green Jobs in the Labor-Intensive Textile and Textile Products Subsector to Promote Green Industry



The Ministry of National Development Planning (PPN)/National Development Planning Agency (Bappenas) has developed a Green Jobs Occupational Map across five strategic sectors and a Green Workforce Development Roadmap for eight sectors. However, the identified green jobs are still dominated by roles requiring higher education qualifications. Roles requiring education below a diploma level—typically filled by the middle class—have yet to be mapped. This presents a particular challenge in labor-intensive sectors such as textiles and garments, which have significant environmental impacts and are prioritized in the 2025–2029 National Medium-Term Development Plan (RPJMN). With support from the Open Society Foundation the Center for Green Industry, Ministry of Industry, SMERU is conducting a study in the textile and textile products (TPT) subsector to identify green job opportunities. The study findings will be synthesized into policy recommendations to help the government accelerate the transformation of the TPT subsector into a resilient and inclusive green industry. [Click the image](#) to learn more about this study.

Latest Publication



The Impact of Super Apps on the Nutrition Transition in Low- and Middle-Income Countries: Evidence from Indonesia

Ordering food through super apps has become a common habit for many people. This article examines how easy access to these services affects body mass index (BMI), overweight, and obesity. One key finding: super app use increases average BMI by 0.6 points and waist circumference by 1.8 cm. What else did the study uncover, and what are their implications for health policy? [Click the image](#) to read the full article.

Blog



Ensuring Children's Meaningful Participation in Research

In many research settings, children are treated only as respondents, leaving their voices underrepresented. Research on children often relies on adult perspectives, resulting in findings that may be biased and not fully reflective of children's experiences. SMERU is committed to ensuring meaningful child participation in its research. How is this done? [Click the image](#) to read the full blog.



SMERU Named in the “100 Think Tanks to Watch 2025” List

SMERU has been named one of the “100 Think Tanks to Watch 2025,” a list published this year by On Think Tanks (OTT). The recognition comes from nominations by peer think tanks, policy professionals, and the wider OTT community, who identified SMERU as an institution delivering meaningful contributions in the past year. This acknowledgment strengthens SMERU’s commitment to enhancing research quality and its role in shaping better public policies. OTT is a global consulting organization that helps research institutions, philanthropies, and governments advance evidence-based decision-making. [Click the image](#) to download the full list of “100 Think Tanks to Watch 2025”.

Activities

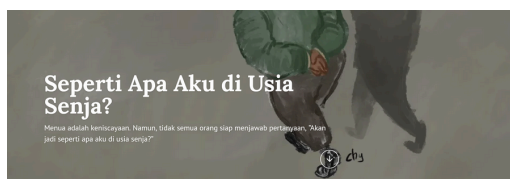


Launching the Findings of the Multidimensional Child Rights Deprivation Analysis

Indonesia remains confronted by substantial child poverty, with 11.4% or 9.2 million children living in poor households in 2024. This issue took center stage at the launch of the multidimensional child rights deprivation analysis held by the Ministry of National Development Planning/Bappenas on 18 November in Jakarta. The launch was officiated by the Coordinating Minister for Human Development and Culture, Prof. Dr. Pratikno (online); the Minister of National Development Planning/Head of Bappenas, Prof. Rachmat Pambudy; the Minister of Women’s Empowerment and Child Protection, Arifah Choiri Fauzi; the Minister of Social Affairs, Saifullah Yusuf; the Head of Statistics Indonesia, Amalia Adininggar; and the UNICEF Indonesia Representative, Maniza Zaman.

This study is the first poverty assessment in Indonesia to apply a multidimensional child rights deprivation approach, developed collaboratively by Bappenas, UNICEF Indonesia, BPS, and The SMERU Research Institute. The approach evaluates child well-being comprehensively across seven dimensions and adjusts indicators according to children’s life stages (0–4, 5–12, and 13–17 years). One of the findings shows that more children experience multidimensional deprivation than monetary poverty alone, and 8.20% are affected by both.

SMERU in the Media



This *Kompas* daily article discusses the rise in life expectancy in Indonesia and the accompanying challenges to quality of life. The economic conditions of older adults are highlighted, as many are no longer working. The article cites a 2022 SMERU study showing that more than 70% of older adults do not have pension benefits or old-age insurance. [Click the image](#) to read the full article.



A recent *SindoNews.com* article points out that efforts to improve social assistance data remain insufficient, as issues such as invalid identities, duplicate beneficiaries, and missed eligible poor households persist. Citing a SMERU study, the article emphasizes the need to strengthen accountability and public involvement to achieve better targeting. [Click the image](#) to read the article.

SMERU Learning Centre



IN-HOUSE TRAINING

Need a customized training?
Contact us now!

0812 5285 5028

- ✓ Syllabus
- ✓ Case Studies
- ✓ Methods
- ✓ Coaching

slclab.id

